

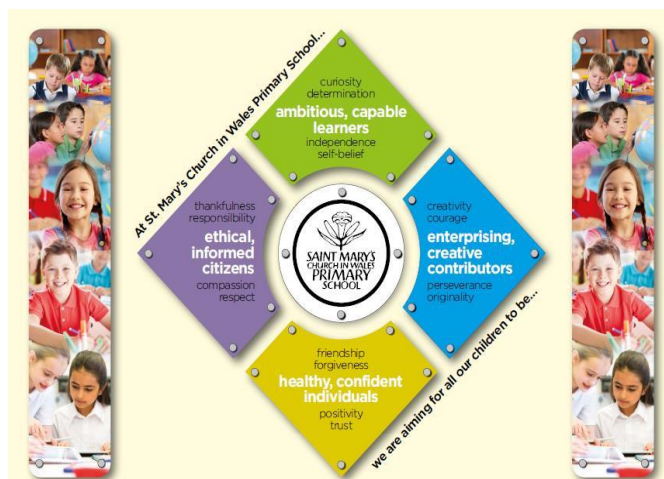
Intermediate Road, Brynmawr. NP23 4SF

Telephone 01495 310525

Email: stmarysciw.primary@blaenau-gwent.gov.uk

Website: <https://www.stmarysciw.co.uk/>

Twitter: @StMarysCIW



22nd October 2020

Newsletter Week 8

Dear Parents / Carers,

With the first half term nearly at an end I would like to thank all the children for their amazing resilience and positivity, in these challenging times. All the children have been so understanding about the “new norm.” They continue to follow our daily handwashing and sanitizing procedures, keep to their bubbles, follow one way systems and do it all with a smile – I am so proud of them!

Thank you to you, as parents / carers, for wearing face coverings on the school site, following the one way system and maintaining a 2 metre distance from staff and others who are not in your household. Your co-operation is appreciated.

I would also like to take this opportunity to thank all the staff. As a team, we have worked together to ensure that the children and one another feel safe and happy, whilst continuing to provide the best learning and well being experiences. There have been so many additional changes to how we operate, each one has been taken on with optimism with our mission statement “As a family, we dream, we believe and we achieve” at the heart of everything we do.

For information, Class dojo (Nursery – Year 2) and Teams (Year 3 – Year 6) will not be accessed or monitored by teachers, from Friday 23rd October 4pm until Monday 2nd November at 9am.

This week’s announcement, from our First Minister, is not what we had hoped for, but I am thankful and relieved that Primary schools will remain open during this second lockdown period, as the children will continue to be able to socialise with their class and keep a sense of routine to their week.

Morning / Afternoon Drop offs

Having been on patrol myself on numerous occasions I am growing increasingly concerned about the safety of children coming to / leaving school.

Please can I ask that the traffic signs are followed – there is **NO** parking / drop off, on either side of the road directly outside the school. I appreciate the mornings are extremely busy times, but this does not mean that there should be illegal parking which affects the safety of children. Traffic enforcement have been contacted.

COVID Information

Please click on the link below for useful information:

[When to take your child for a COVID-19 test](#)

Parent mail

This is now live – please download the FREE app, as this is where all school information/ newsletters / updates etc will be uploaded. This means you able to access information quickly and easily. We will only be sending electronic information home through parent mail and email. Paper copies of letters etc will no longer be sent home.

I hope you are all able to make the most of precious family time together for half term – fingers crossed for dry weather!

We look forward to seeing you on **Tuesday 3rd November** (Monday 2nd November is an INSET, school closure day).

Take care and stay safe.

Best wishes

Mrs P Willis
Acting Head Teacher