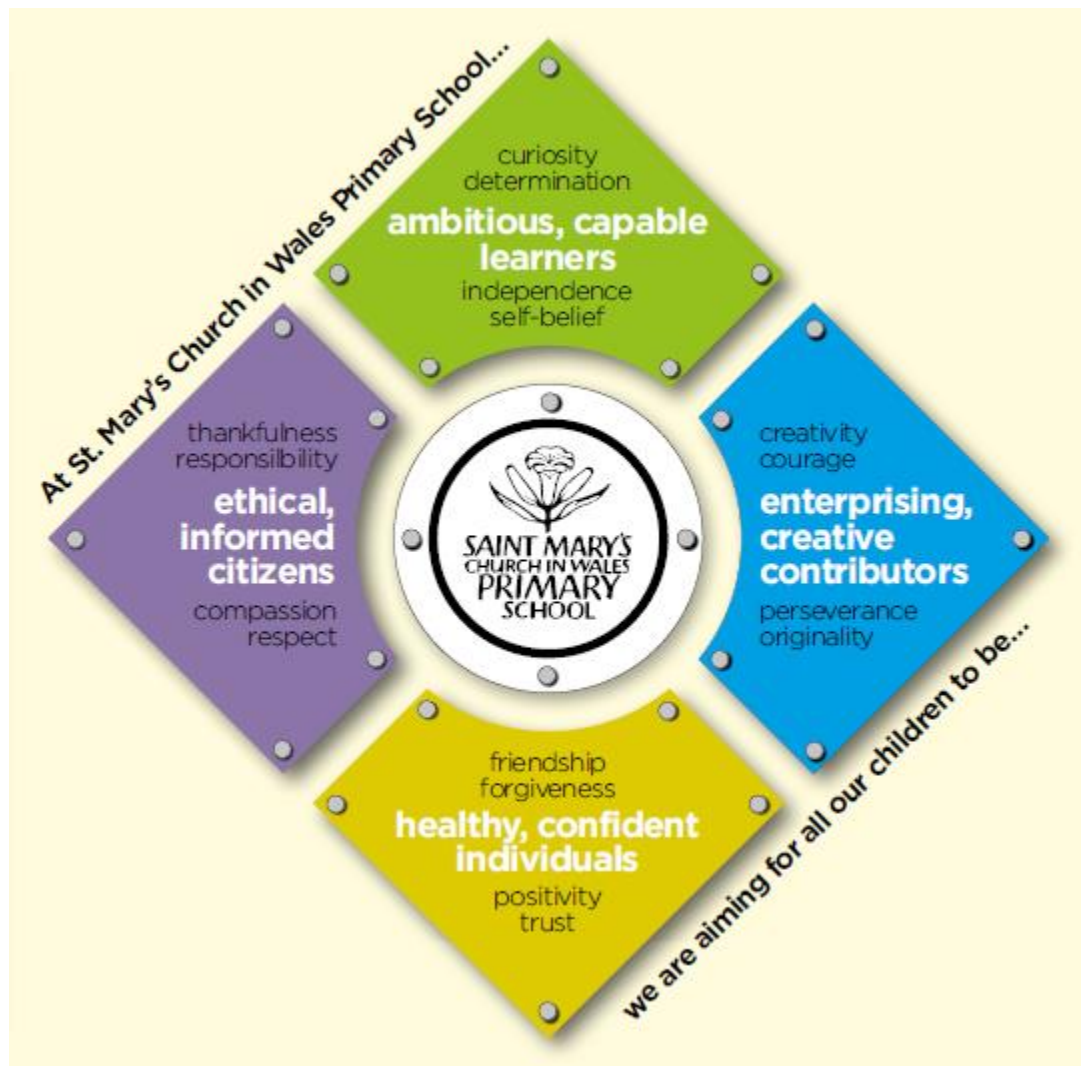


ST MARY'S CHURCH IN WALES SCHOOL

Governor Annual Report 2019/20



Intermediate Road, Brynmawr, NP23 4SF
01495 310525

Email: stmarysciw.primary@blaenau-gwent.gov.uk

Website: <http://www.stmarysciw.co.uk/>

Follow us on twitter: @stmarysciw

A Summary of School Financial Information 2019/20

Funding Received from the LA	£976,506
Employee Costs	£903,949
Energy Costs	£26,468
Capitation Costs	£33,634
Premises Costs	£37,483
Communications	£7,579
Transport	£0
Central Services/Service Level Agreements e.g. catering	£86,902
Total Expenditure	£1,096,790
Income (e.g. maternity, sickness compensation)	£61,656

*During the financial year 2019/20, no Governors claimed expenses for carrying out their role.
During the financial year 2019/20, no donations or gifts were made to the school delegated budget.*

The Governors have worked hard to maximise staffing levels with a surplus budget carried forward in to 2020/21 financial year in readiness for the further forecast budget cuts ahead for schools and other Local Authority Services.

The Governors have scrutinised Service Level Agreements with the Local Authority to ensure the school receives value for money and to be able to invest in classroom support.

Governing Body

The Governing Body of the school aim to provide an excellent education both academic and social in a Christian context to all pupils.

The main functions of the Governing Body are with regard:

1. Agreeing the strategic priorities of the school and monitoring the actions to meet these priorities
2. Monitoring the performance of the school e.g. pupil results, attendance, etc
3. Agreeing the curriculum for pupils
4. The admission, welfare & behaviour of all pupils
5. The appointment and welfare of all staff
6. The provision, maintenance and upkeep of the school buildings & grounds
7. The provision and management of resources e.g. school budget

The Governing Body meets every half term, but this can be more frequent if required. The minutes of all Governing Body meetings are available from the School Office.

On joining the Governing Body, all Governors are provided with a handbook and training providing information on how they should discharge their duties. The Diocese and Local Authority also provide training events for all Governors on a range of subjects.

As part of the work of the Governing Body, they monitor the implementation of School Policies and make amendments as deemed necessary.

This year the Governing Body have reviewed the following Policies:

- School Admission 2020/21
- Curriculum
- Teaching & Learning
- Performance Management
- Volunteers in the Workplace
- Safeguarding
- Additional Learning Needs
- Wellbeing & Good Practice
- Health & Safety
- Strategic Equality Plan

Who's Who on the Governing Board 2020/21

Chairperson Mr Alan Williams, 57 Greenland Road, Brynmawr, NP23 4DU
Clerk to the Governors Mr Jon Mower Via Email: Julie.parry@sewaleseas.org.uk

GOVERNOR	Type of Governor	START DATE	END DATE
Mr A. Williams	Foundation	01/09/2018	31/08/2022
Cllr B. Sutton	Minor Authority	30/05/2017	29/05/2021
Mrs P Willis	Acting Headteacher	01/09/2020	31/08/2021
Jo Broad	Teacher	02/02/2019	01/02/2023
Mr John Roberts	Foundation	02/06/2018	01/06/2022
Mrs S Stephens	Foundation	03/11/2017	02/11/2021
Mr G. Hill	Foundation	03/05/2017	02/05/2021
Mrs R. Humphreys	Foundation	08/05/2017	07/05/2021
Mrs B. James	Foundation	08/05/2017	07/05/2021
Mrs A. Edwards	Foundation	22/03/2017	21/03/2021
Rev'd Rana Khan	Foundation	09/06/2017	08/06/2021
Vacancy	Staff Governor		
Mrs Rani Mallison	Parent Governor	07/10/2020	06/10/2024
Mrs C Gardener	Local Ed Authority	10/07/2020	09/07/2024
Mr Jon Mower	Clerk	01/03/2013	

Senedd Ysgol

The Senedd Ysgol is made up of 2 pupils from each of the years 2, 3, 4, 5 & 6. The Year 6 members represent the school on the Blaenau-Gwent Grand Council that meets termly.

The Senedd Ysgol meet approximately monthly to discuss a range of issues e.g. resources for the playground, fund raising ideas, curriculum reviews, school dinners and other school issues. Recently the Senedd Ysgol organised a vote amongst pupils for a change to the school dinner menu for the Winter so that there are two hot meal choices rather than the salad bar. They also organise votes for the PTA film nights.

It is planned for members of the Governing Body to meet with the Senedd Ysgol during the course of the year so that the Governing Body can hear how our pupils would like to change or improve aspects of school life.

Who's Who in the Staffroom in 2020/21

During the academic year 19-20 the Governing Body approved the secondment of the substantive Headteacher, Darren Jones and appointed Paula Willis as Acting Headteacher for the academic year 20-21.

Acting Headteacher	Paula Willis	Deputy Headteacher	Alison Chaplin
Nursery	Mrs D Munday (Teacher) Mrs C Williams (Teaching Assistant)	RE Teacher & Environmental Ed	Mrs H Francis
Reception	Miss K Matthews (Teacher) Mrs S Brown (Teaching Assistant)	Administrative Staff	Mrs L Webb Mrs M Dennington Mrs L Assirati
Year 1	Mrs J Broad (Teacher) Mrs M Thomas (Teaching Assistant) Mrs L Williams (Teaching Assistant)	Dinner Time Staff	Miss J Davies Mrs B Knapp Miss T Nevill Miss P Tilley Miss D Rogers Mrs R Walker Mrs M Davies
Year 2	Mrs A Edwards (Teacher) Mrs K Miles (Teaching Assistant) Miss L Tetley (Teaching Assistant)	Cleaning Staff	Miss J Davies Miss T Nevill Miss P Tilley Miss D Rogers
Year 3	Miss S Sweet Mrs J Hart (Teaching Assistant, shared)	Kitchen Staff	Ms. L Watkins Mrs N Parry Mrs M Lewis Mrs R Smith Mrs S. Wylor Mrs A. Ward
Year 4	Mrs A Chaplin (Teacher) Miss K Williams (Teaching Assistant)	SEN Support	Blaenau-Gwent SEN Service & Penycwm Outreach Service
Year 5	Miss S Lewis (Teacher) Miss E Thompson (Teaching Assistant) -shared	Music Teachers	Gwent Music
Year 6	Mr C Bartlett (Teacher) Miss E Thompson (Teaching Assistant) - shared		

The Curriculum at St Mary's Church in Wales School

At St Mary's School, we promote a broad and balanced curriculum taught through a variety of teaching methods. Our curriculum statement is in accordance with the requirements to work towards the New Welsh Curriculum (Statutory in September 2022).

The School has begun planning for the implementation of the new curriculum for schools in Wales. A number of developments have taken place with regard the processes and systems in school to support the delivery of a new curriculum. The Digital Competency Framework has already been fully implemented across the school along the four core purposes and areas of learning and experience

Our vision aims to prepare our children with the skills, knowledge and attributes to equip them for life in the twenty first century. We aim to provide education of the highest possible standard within the context of Christian belief and practice. To this end we will offer all our pupils an appropriately differentiated, challenging and stimulating curriculum in the context of a thematic approach.

We provide our pupils with a curriculum which seeks to educate the 'whole person', both in academic and practical ways. We strive to make our curriculum appropriate to pupils' needs with teaching styles that develop positive attitudes through enquiry based learning.

Our teaching will promote the following:

- Ambitious, capable learners
- Ethical, informed citizens
- Enterprising, creative contributors
- Healthy, confident individuals

All pupils have an experience of environmental education on a weekly basis, providing opportunities to develop their understanding of the local environment and a range of personal skills/characteristics outside the classroom.

The School follows the Church in Wales curriculum for Religious Education. This curriculum has a strong emphasis on Christianity with comparative studies made of the other main World Religions. Children with a statement of Special Educational Needs may be granted exemptions from certain aspects of the curriculum.

A strategic priority of the school is to begin planning for the implementation of the new national curriculum that is soon to be introduced in Wales. The School is developing authentic, experiential practices, in readiness for this by evaluating and improving teaching and learning experiences, assessment procedures and self evaluation systems and processes.

Eco-Schools

The School has a strong focus on Environmental Education with Mrs Francis carrying out environmental education lessons in each Foundation Phase class on a fortnightly basis. This lesson is also seen as a time to develop numeracy and literacy skills through an environmental activity. Ms Webb, Mrs Francis and the Eco Club and Gardening Club have been productive in developing areas around the school and highlighting ways that the school can become more eco-friendly.

Teaching Welsh at St Mary's School

As a school situated in Wales and through our formal and informal curriculum we aim to foster and develop an awareness of Welsh language, culture and heritage as well as a knowledge and understanding of the wider cultural inheritance of Wales and the UK. Welsh is taught in the Foundation Phase as part of Welsh Language Development across all the areas of learning. Welsh is taught as a second language in the juniors and our aim is for all children to become as bilingual as possible. We provide all pupils with opportunities for them to use Welsh daily, in a variety of contexts e.g at snack time and at playtime. Simple vocabulary, phrases and sentences are introduced as soon as possible to the nursery and reception class, so that they hear Welsh words immediately they start school and this is continued throughout the school. All staff use incidental Welsh throughout the week as well as the formal lessons. Standards in Welsh are monitored and pupil attainment in Welsh is communicated to the secondary school each year 6 pupil moves to.

The School is currently working towards the 'Campws Cymraeg' accreditation promoting the Welsh language dimension across the school. The 'Cryw Cymraeg' are a key part in this work and they lead an assembly once a week, play Welsh games on the playgrounds and lead other initiatives e.g. weekly Welsh phrase.

Toilet Facilities at School

At St Mary's School there are toilet facilities located around the school for Foundation Phase pupils, Junior pupils and adults. The toilets are located close to the teaching areas and are at the requisite height for the different aged pupils. Toilet areas in the school are cleaned throughout the school day, each evening at the end of school.

Links with the Community

The School maintains close links with the community around us and has a special link with St Mary's Church.

The School has regular visitors to take Collective Worship on a weekly basis. These visitors enrich the sessions and provide good learning experiences.

St Mary's School works closely with other local schools with regard transition arrangements and other area events e.g. sporting events.

Through working with local organisations e.g. the Rotary Club, the school takes part in local events such as Songs of Praise and competitions.

The school takes part in the annual Remembrance Day service held in the town. Year 6 pupils do readings as part of the service and lay a wreath on behalf of the school.

Admission Procedures

The Governing Body of the School is the Admission Authority for the School, and the dates for admission are in line with the dates for admission to all schools in Blaenau-Gwent. The Policy for Admission is reviewed every year by the Governing Body.

The Governors have a number of criteria that are used by the Governing Body to place applications in priority when the school is over subscribed. These criteria are within the policy and prospective parents are made aware of these criteria when applying for a place at the school.

Admission forms and further information can be gained from the School Office.

Admission & Access of Disabled Pupils

St Mary's Church in Wales School is a welcoming and successful school with a wide catchment area. Parents wanting their child/ren to attend the school are welcome to visit the school prior to making an admission to meet the Headteacher.

If a parent feels that their child/ren will require special arrangements for access to the school or has Additional Learning Needs then an early visit to the school to discuss the circumstances is recommended. This will help ensure that any modifications or support are in place on the date of admission. The School has an Accessibility Plan that assists the School in meeting the needs of individuals.

Additional Learning Needs (ALN)

During the last academic year the ALN Policy for pupils in the School was reviewed. In the ALN policy there are a number of sections dealing with:

- Principles
- Responsibilities
- Identification and review of pupils
- Evaluating success
- Partnership with parents
- Liaison with external agencies

The School utilises the Additional Learning Needs Funding from the Local Authority to support pupils in class, withdraw pupils for specialist teaching and to carry out diagnostic assessments.

Children entering the school with 'English as an Additional Language' also receive support to enable them to access the curriculum.

Every pupil with additional needs has a bespoke Individual Development Plan (IDP). This enables a personalised programme of support to be put in place by the school and external agencies.

Communication with Home

Communication is regarded as very important by the School as it ensures parents and carers have the right information to support their child as they move through the school. At present the main forms of school information are parentmail and email (for newsletters, updates and information) Class Dojo: Nursery – Year 2, Microsoft Teams: Years 3 – 6, (these are learning platforms and are also used for distance learning) and Twitter

The school website continues to be developed, hosting a number of important documents and providing pupils and staff with links to important sites used for home and school learning.

The School newsletter and St Mary's Messenger is available by parent mail and email. If you don't yet receive this letter by parentmail / email, please contact the school office with your details.

Sporting News

The School follows a physical education curriculum for the school population and it also provides a range of extra-curricular activities for the Junior children.

Due to COVID-19 the School was unable to compete in tournaments, sporting fixtures, cross country events and athletic days during the last year. It is hoped when the pandemic ends that the pupils will continue to develop their love of sport that is nurtured within the school, improving their skill level in all aspects of PE and team games.

Promoting Healthy Eating

The School continues to promote healthy eating through healthy break time snacks and curriculum lessons.

Pupils develop good attitudes and knowledge of how to keep healthy. The most recent Sport Survey indicates that many of our pupils are doing sporting activities in school but also outside school.

Blended Learning

Due to the unprecedented times of the global pandemic, St Mary's has a provision in place to ensure that learning is available for all pupils. We use Class Dojo (Nursery – Year 2) and Microsoft Teams (Years 3 -6) to ensure that learning continues, even if pupils are self isolating.

Learning activities are uploaded to these platforms with teachers checking in with pupils to support with learning and well being.

Message from the Chair of the Governing Body

Thank you to everyone for taking the time to read this Annual Governor Report to Parents.

During the 2019/20 year, the Governors were pleased to be able to appoint two new teachers to the school team. Miss Sweet and Miss Matthews joined the school teaching Year 3 and Reception from September 2020

During the 2019/20 school year, the school was repurposed from March 2020. This was due to the global pandemic caused by COVID-19. In July 2020 the school reopened to all St Mary's pupils for "Check in and Catch up" days with their teachers, a long with accessing learning from home through the use of digital platforms.

As a school community we continue to strive to improve standards in all aspects of school life and I feel the Governors have a very good understanding of the work of the school through the regular meetings and discussions with the school leadership team. The school has consolidated performance in the curriculum subjects and it is fully committed and engaged in its planning, assessment and provision for the new curriculum in Wales. With the many changes that are happening at the moment, both health related and in relation to, it is a challenging time for all concerned. The continued decrease in funding provides further challenges to the school and governing body. These challenges are faced with a "can do" attitude with the Governing Body and School leadership and teaching team fully committed in continuing to raise standards

At this time, on behalf of the governing Body, I would like to express my sincere thanks to the staff, children and parents / carers for facing the challenges of 2020 with resilience, determination and positivity.

Thank you for your continued support of St Mary's Church in Wales School, where "As a family, we dream, we believe and we achieve"

Regards,

Alan Williams
Chair of the Governing Body

Target Setting 2020/21

Due to the global pandemic, caused by COVID-19 the requirement for target setting by Welsh Government has been suspended.

At this time, teaching staff are focused on ensuring that progress is accelerated for every pupil and that they have the skills to be the best they can be.

We continue to track every pupil and will ensure that support and challenge is both appropriate and responsive throughout the school year.

Attendance targets have also been suspended for this academic year.

School Strategic Priorities 2020/21

The strategic priorities for this academic year were agreed by the Governing Body of the School at the second meeting of the Autumn Term 2019. These actions were identified following an analysis of:

- Review of teaching and learning taking place in the school
- Listening to learners/pupils
- Recommendations from the Estyn Inspection and Section 50 (Church) Inspection

Strategic Priorities 2019/20	Evaluation
To begin to develop school practices, processes and systems in line with Successful Futures and the New Curriculum	<ul style="list-style-type: none"> • AOLE team leaders and teams created • Training for Foundation Phase staff on effective Foundation Phase provision •
To continue to develop good and excellent practice and consolidate standards of attainment & teaching of Language, Literacy & Communication	<ul style="list-style-type: none"> • Developing authentic oracy activities for pupils through the implementation of a school radio station. • Developed the role of the Criw Cymraeg • Developed and implemented an action plan for implementation of Campus Cymraeg
To continue to develop good and excellent practice and consolidate standards of attainment & teaching mathematics and numeracy	<ul style="list-style-type: none"> • Purchase of resources to support the teaching of numeracy across the school
To continue to develop practices and processes for the development of Wellbeing across the school	<ul style="list-style-type: none"> • Implementation of school values linked to 4 core purposes • RRS week held • Attendance of regular network meetings in cluster • Class charters across the school • ELSA programmes implemented across the school for identified pupils
To continue to develop and consolidate the standards of teaching and learning in science and technology	<ul style="list-style-type: none"> • Digital learning platforms established for blended learning • Improved connectivity to 100MB/sec • Increased classroom connectivity – 45 connections per classroom/30 pupils •
To continue to develop the effectiveness and impact of school leaders	<ul style="list-style-type: none"> • Developed understanding of staff of SLO • Implementation of bespoke programmes of support and development for staff to meet statutory, school & individual needs

Strategic Priorities 2020 / 21

- To develop teaching & learning in line with the development of the new curriculum
- To continue to improve school assessment approaches and pupil performance
- To continue to develop practices and processes for the development of Wellbeing across the school
- To continue to develop the effectiveness and impact of school leaders

Pupil Deprivation Grant (PDG)

In this financial year, the School received £19, 550 PDG grant from the Welsh Government. This grant is used by the school to support the education of pupils who are on Free School Meals. Currently the Free School population of the school is approximately 14% out of the 249 pupils. The school undertakes a number of activities to support these pupils including increasing support from staff, purchase of resources, training for staff and accessing specialist support where appropriate. The spending of this grant is regularly monitored as part of the financial monitoring by the Governing Body.

SCHOOL CALENDAR 2020 / 21

	Pupils Term Begins	Half Term	Pupil Term Ends	Teacher Training Days
Autumn Term 2020	Wednesday 2 nd Sept	Monday 26 th October To Monday 2 nd November	Friday 18 th December	Tuesday 1 st September Monday 2 nd November
Spring Term 2021	Tuesday 5 th January	Monday 15 th February To Friday 19 st February	Friday 26 th March	Monday 4 th January
Summer Term 2021	Monday 12 th April	Monday 31 st May To Monday 4 th June	Friday 16 th July	Monday 7 th June Monday 19 th July Tuesday 20 th July
Total				+ 6 Teacher Training Days

Thank You

Thank you for taking the time to read the Annual Governor Report. I hope you have found the information within the report interesting and informative.

If you have any further questions or queries with regard this information, please don't hesitate to contact the School Office.

Thank you to the whole school community for the support, resilience, understanding and positivity, during the challenges of the past School year.

By continuing to work in partnership, I am confident that the school will continue to move forward in the coming years and continue to be a place where "As a family we dream, we believe and we achieve."

Regards,
Mrs P Willis
Acting Head Teacher